

2

Operating Practices in Flat Rolling

Second in the APT suite of computer based training courses, Operating Practices in Flat Rolling contains six modules, covering operator practices for tandem and single stand cold rolling.

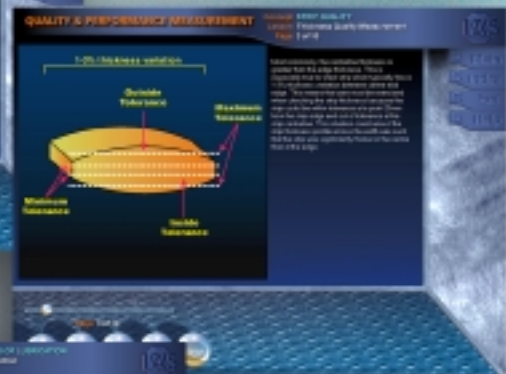
Roller Facilities and Responsibilities



Scheduling



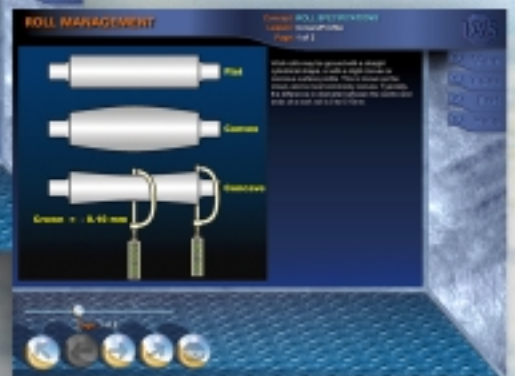
Quality and Performance Measurement



Threading and Rolling



Lubrication and Cooling

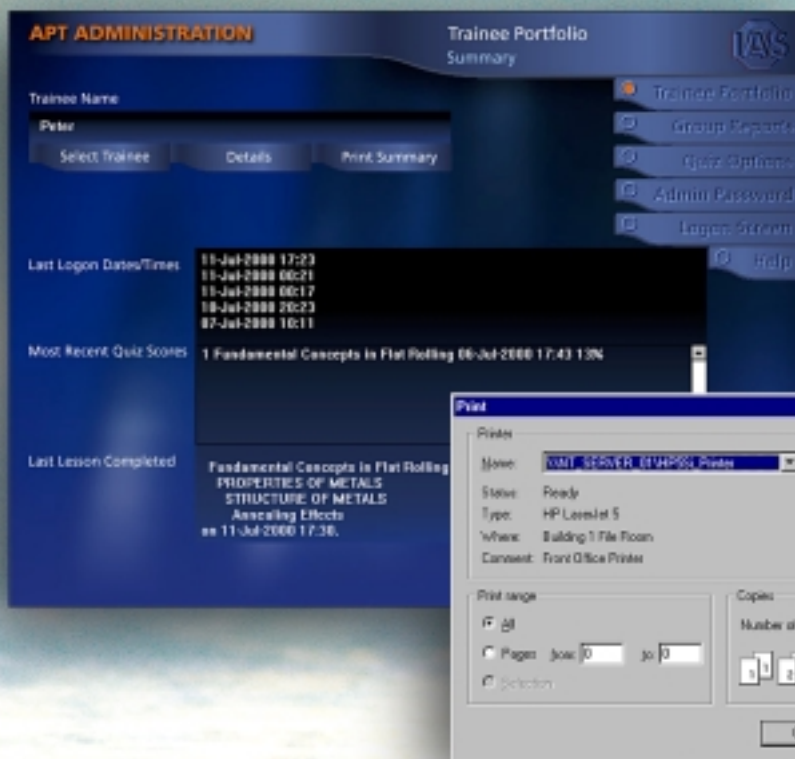


Roll Management



Computer Based Training for Rolling Mill Personnel

The course design provides an effective, interactive and stimulating learning environment to ensure successful outcomes for participants.



Separate administration functions allow you to:

- Track and report trainee progress
- Configure trainee preferences
- Set quiz preferences

Contains animation, video footage and voice-overs narration and includes a built-in quiz to ensure best results from your training.